

Students (AY 2024-25)



About **83,000** students

62% women

24% from outside Piedmont Region

7% students with foreign nationality

Over **24,200** first-year students

of which 6% students with foreign nationality

About **1,800** students enrolled on masters - 1st
and 2nd level

About **1,500** PhD students (up to 31.12.2024)

Over **1,100** disabled students and over

3,100 with specific learning disability (SLD)

Teaching and Learning (AY 2024-25)



70 Undergraduate degree programs

10 5/6 year postgraduate degree programs

About **90** Postgraduate degree programs

About **75** first level Continuing education
programs

Over **60** second level Continuing education
programs

70 PhD programmes

3 specialisation course

About **60** specialisation schools (AY
2023/24)

1 Institute of Higher Studies: Scuola Studi
Superiori (SSST)

Graduates (2024)



Over **14,900** graduates of which about **9,800** in undergraduate and 5/6 year postgraduate degree programs over **5,100** in postgraduate degree programs

Graduate Employment Rate 2023 - 1 year after graduation:

(Source: AlmaLaurea 2025 – ISTAT WorkForce)

Total: **64%** (national average 60%)

of which

Undergraduate degrees*: **52%** (national average 45%)

5/6 year postgraduate degrees: **86%** (national average 78%)

Postgraduate degrees: **79%** (national average 80%)

* Total number of undergraduate degrees, regardless they attend further studies after graduation.

International Networks (AY 2024-25)



Over **25** international double-degree programs/joint degree programs

Degree programs over **520** academic cooperation agreements with universities and research institutions over **80** countries

Over **25** courses taught in English language

Students from **130** foreign countries

About **3,800** students with a foreign qualification/degree (5% of total) of which about **1,100** first-year students

About **1,200** incoming Erasmus students (AY 2023-24)

Over **2,100** outgoing Erasmus students (AY 2023-24)

[\(Read more\)](#)

Research and technology transfer (2024)



Over **520** projects presented in competitions

Over **55** registered patents (2022-2024)

Over **28,500** academic publications (2022-2024)

About **1,100** junior researcher

5th in Italy with **8** departments selected by the Italian Ministry of Education, University and Research (MIUR) as "**Departments of Excellence**"

€ 14.9 million earned through research and consultancy activities (2023)

Staff (until 31 December 2024)



Academic Staff

About **660** Professors

About **1,100** Associate Professors

Over **650** Lecturers

Women **45%**

Administrative Staff

About **2,000** permanent employees

Over **140** fixed-term employees

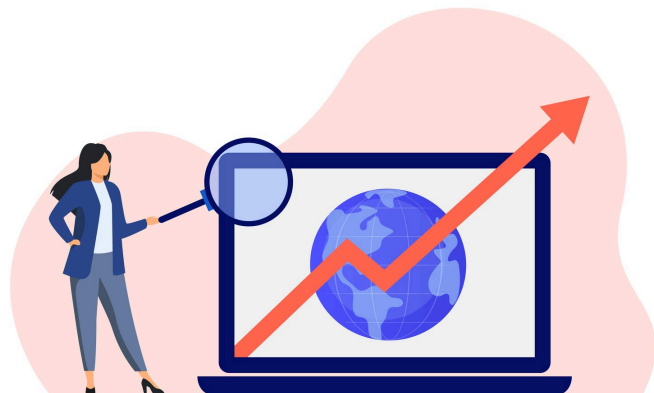
Women **69%**

UniTo in figures



UNIVERSITÀ
DI TORINO

International Rankings (2024)



Among the **top 300** universities worldwide

and **4th** in Italy for **ARWU Shanghai**

209th worldwide and **6th** in Italy for **US News Best Global Universities**

188th worldwide and **6th** in Italy for **NTU**

Taiwan

371st universities worldwide for **QS**

Among the **top 500** universities worldwide

and **21st** in Italy for **THE**

188th universities worldwide and **4th** in Italy
for **QS Sustainability Ranking**

15th worldwide and **3rd** in Italy for
Greenmetric universities sustainability ranking
([more on rankings](#))

University Library System (2024)



22 libraries spread over 33 locations

Over **3,000** workstations for users

About **3** million volumes

About **14,900** new printed bibliographic
acquisitions

Over **480,000** online resources (e-journals,
e-books, data bases, documents, reports)

Over **16,800** active users

Over **2,7** million visits to **Discovery Eureka**

Over **101,000** local and interlibrary loan

Sustainability

Social sustainability



Progressive tuition fee system (AY 2024-25)

About **9,400** students receiving
scholarships and other grants (AY 2022-23)

Over **€ 665,000** fund to support disabled
students or students with specific learning
disability (2023)

About **26,300** internships activated (AY
2023-24)

About **560,000m²** of space in University
buildings (2023)*

Over **253,000** cubic meters: water
consumption (2023)*

About 86,200 MWh of energy consumption of which
33% from cogeneration and photovoltaic systems
(2023)*

About **19,400** tonnes of CO₂ equivalents emitted
(2023)*

96% Green procurement (refer to
APE-CAM criteria**) (2023)*

* 2024 figures are currently being updated

** Ecological Public Procurement - [Minimum Environmental Criteria](#)